

España

Collection

España
Collection

Livingceramics

ALLURE

EOS

EME

BERA&BEREN WALL

GROUND WALL

GUBI-WALL

STONELIKE WALL

GRES PANIA

LYON

METEOR

TIVOLI

Keraben

LUXURY

SAVIA



Livingceramics



ALLURE

Allure conveys the strength, character and temperament of the stone on which this collection is inspired. The veins have been carefully treated to highlight the personality of this material. The result of this work is a set of captivating and aesthetic pieces that will beautify the space where they are installed. The series presents a Soft Bush Hammered surface that reproduces to the touch the characteristic texture of the natural material; which together with the four tones in which it is presented, extend the possibilities of combining the collection of collections Contemporary Mixtures Surfaces.



ALLURE



ALLURE_BEIGE



ALLURE_LIGHT-GREY

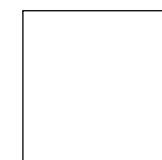


45x90 cm. - Soft B.H. (R9) : 1,800 BAHT/SQM.
ACTUAL SIZE : 448x898 mm.

90x90 cm. - Soft B.H. (R9) : 2,100 BAHT/SQM.
ACTUAL SIZE : 898x898 mm.



45x90 cm.
THICKNESS : 9 mm.



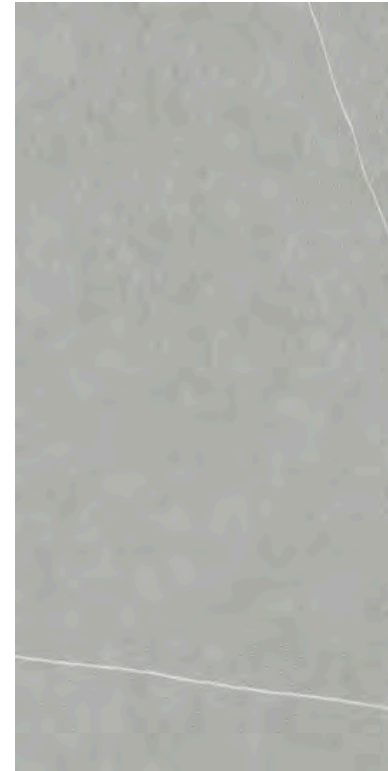
90x90 cm.
THICKNESS : 9 mm.

SURFACE
- Soft B.H. (R9)





ALLURE



ALLURE_GREY



ALLURE_ANTHRACITE

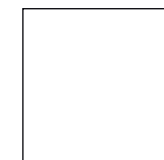


45x90 cm. - Soft B.H. (R9) : 1,800 BAHT/SQM.
ACTUAL SIZE : 448x898 mm.

90x90 cm. - Soft B.H. (R9) : 2,100 BAHT/SQM.
ACTUAL SIZE : 898x898 mm.

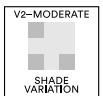


45x90 cm.
THICKNESS : 9 mm.



90x90 cm.
THICKNESS : 9 mm.

SURFACE
- Soft B.H. (R9)





EOS

Eos is essence, matter; it is the return to the natural world, to the origin of all things. All the subtleties of natural wood have been taken care of to inspire a refined and elegant material. This collection is nature for the five senses, because it transmits serenity and calmness. Eos presents large rectangular formats 20x120 cm, reminiscent of the extensive forests of northern Canada; that, together with the four sober tones presented by the series, modularly complete the Contemporary Mixtures Surfaces set.



EOS



EOS_ALMOND



EOS_CLEAR



EOS_COAL

20x120 cm. : 2,100 BAHT/SQM.
ACTUAL SIZE : 198x1198 mm.



20x120 cm.
THICKNESS : 9 mm.

SURFACE
- NAT (R9)





EME

The light and beautiful design of Eme transmits the serenity of the Mediterranean Sea, as it is inspired by and represents the richness of the warm coastal land. The firm personality of the stone merges with the light design of watery areas, to present a balanced proposal. Thanks to the variety of formats that Eme presents and the extensive chromatic range composed of three natural shades, this series becomes essential within the Contemporary Mixtures Surfaces set due to its versatility and modulation possibilities.



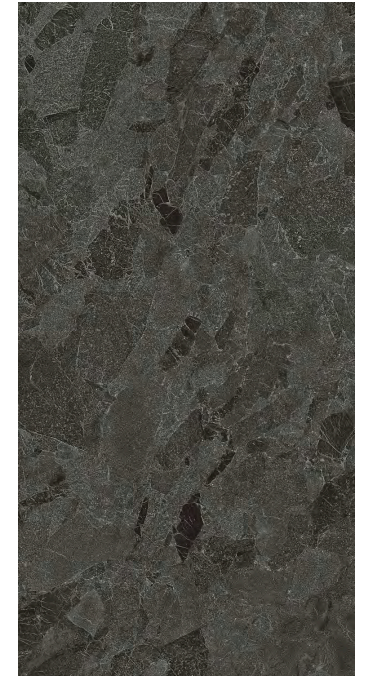
EME



EME_LIGHT GREY



EME_GREY



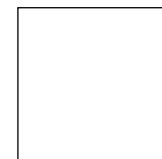
EME_ANTHRACITE

45x90 cm. : 1,800 BAHT/SQM.
ACTUAL SIZE : 448x898 mm.

90x90 cm. : 2,100 BAHT/SQM.
ACTUAL SIZE : 898x898 mm.

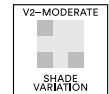


45x90 cm.
THICKNESS : 9 mm.



90x90 cm.
THICKNESS : 9 mm.

SURFACE
- Natural





BERA&BEREN WALL

The Bera&Beren Wall collection takes as a reference the Portuguese and Catalan limestones to propose a series of visual complements to the whole Contemporary Mixtures Surfaces set. Without losing the minimalist and refined character that represents this series of stony character, a functional and great personality wall tile collection is presented in 30x90 cm. This collection offers a choice of four timeless and natural tones, and three reliefs: Dot, which highlights the pleasant Bush Hammered texture own of stone; Saw representing engraving effect of horizontal lines and Six, forming a distracted network of regular hexagons.



BERA&BEREN WALL



BEREN-WALL_BISCUIT-SIX



BEREN-WALL_DARK GREY-SIX

30x90 cm. : 1,800 BAHT/SQM.
ACTUAL SIZE : 298x898 mm.



30x90 cm.
THICKNESS : 10.5 mm.

SURFACE
- Matt





BERA&BEREN WALL



BEREN WALL BISCUIT SAW



BEREN WALL DARK GREY SAW



30x90 cm. : 1,800 BAHT/SQM.
ACTUAL SIZE : 298x898 mm.



30x90 cm.
THICKNESS : 10.5 mm.

SURFACE
- Matt





GROUND WALL

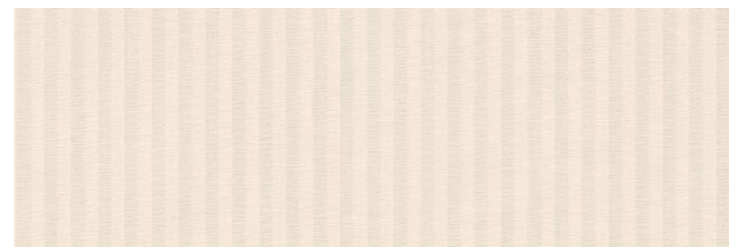
Ground Wall takes as a reference subtleties of the limestone of the Loire Valley, the texture of the natural cement and a smooth gradations of the clay to present a daring piece in its proposal, but versatile in its application in interiors thanks to the format 30x90cm, making it a perfect complement to Contemporary Mixtures Surfaces.



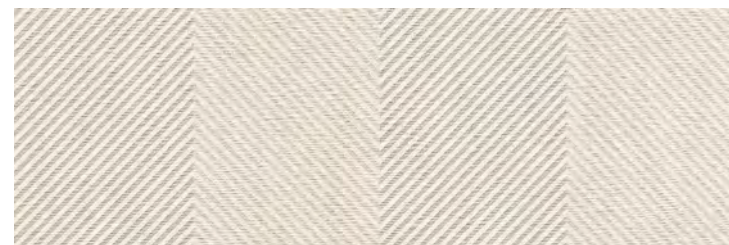
GROUND WALL



LIGHT BRUSH_GROUND



LIGHT TIP_GROUND



LIGHT TWIST_GROUND



30x90 cm.
THICKNESS : 10.5 mm.

SURFACE
- Matt



30x90 cm. : 1,800 BAHT/SQM.
ACTUAL SIZE : 298x898 mm.



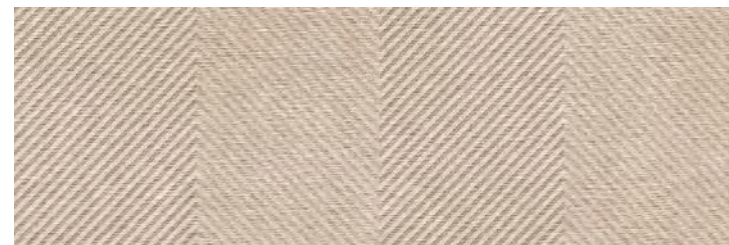
GROUND WALL



CREAM BRUSH_GROUND



CREAM TIP_GROUND



CREAM TWIST_GROUND

30x90 cm. : 1,800 BAHT/SQM.
ACTUAL SIZE : 298x898 mm.



30x90 cm.
THICKNESS : 10.5 mm.

SURFACE
- Matt





GROUND WALL



GREY BRUSH_GROUND



GREY TIP_GROUND



GREY TWIST_GROUND



30x90 cm.
THICKNESS : 10.5 mm.

SURFACE
- Matt



30x90 cm. : 1,800 BAHT/SQM.
ACTUAL SIZE : 298x898 mm.





GUBI-WALL

The polished look of microcement grants to Gubi Wall collection a minimalist and modern character. This is a perfect complement to the whole Contemporary Mixtures Surfaces set by the high functionality that gives the 30x90 cm format and the four colors choice. The heterogeneities of the natural surface, the aqueous effects and the salts have remained to propose a series of three simple and elegant reliefs. First, Calm conveys harmony and is soft to touch, while Prints highlights the beauty of imperfection and Peak creates a unique optical game.



GUBI-WALL



GUBI-WALL_ANTHRACITE-PEAK



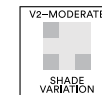
GUBI-WALL_ANTHRACITE PRINTS

30x90 cm. : 1,800 BAHT/SQM.
ACTUAL SIZE : 298x898 mm.



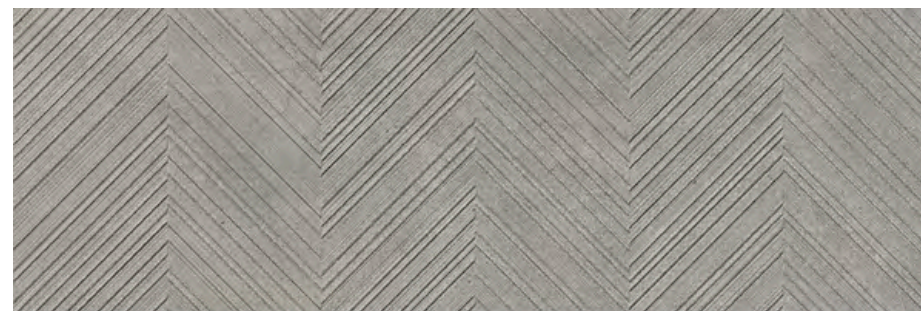
30x90 cm.
THICKNESS : 10.5 mm.

SURFACE
- PEAK
- PRINTS





GUBI-WALL



GUBI-WALL_CLOUD PEAK



GUBI-WALL_CLOUD PRINTS



30x90 cm.
THICKNESS : 10.5 mm.

SURFACE
- PEAK
- PRINTS



30x90 cm. : 1,800 BAHT/SQM.
ACTUAL SIZE : 298x898 mm.

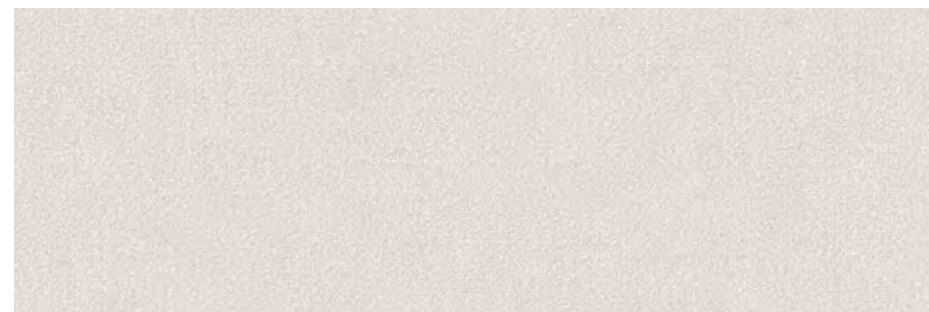


STONELIKE WALL

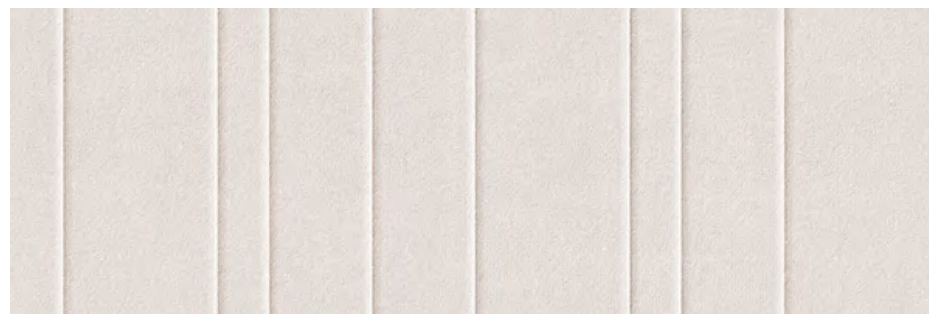
Stonelike Wall enriches the Contemporary Mixtures Surfaces by its diversity, as it discovers a precise selection of stones from the quarries of the world. The imperfections proper to the matter are canceled out, to accentuate the intrinsic beauty of these natural stones and light in format of 30x90cm.



STONELIKE WALL



CLEAR MARK_STONELIKE



CLEAR FEEL_STONELIKE

30x90 cm. : 1,800 BAHT/SQM.
ACTUAL SIZE : 298x898 mm.



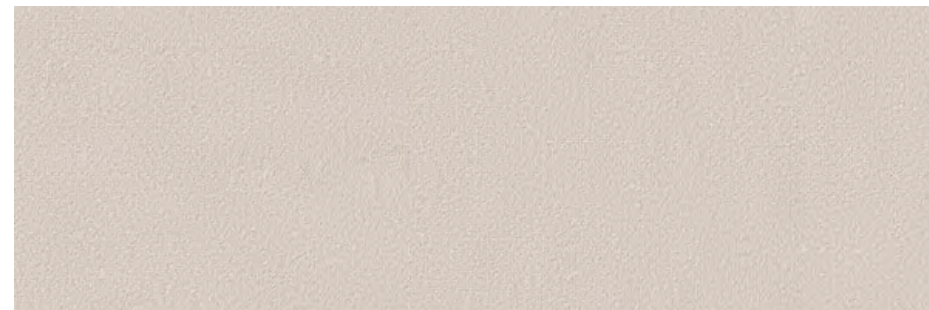
30x90 cm.
THICKNESS : 10.5 mm.

SURFACE
- Matt





STONELIKE WALL



GREIGE MARK_STONELIKE



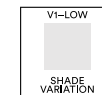
GREIGE FEEL_STONELIKE

30x90 cm. : 1,800 BAHT/SQM.
ACTUAL SIZE : 298x898 mm.



30x90 cm.
THICKNESS : 10.5 mm.

SURFACE
- Matt





GRES PANIA



LYON

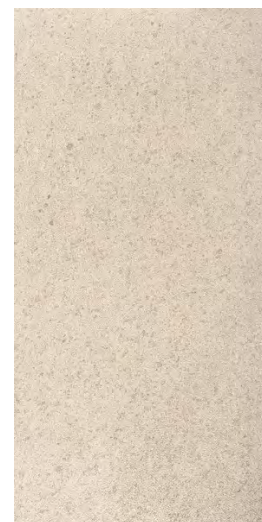
Full Body Porcelain Tile

The Lyon series is a technical through-body porcelain which, thanks to its wide variety of finishes and formats, is ideal for any architectural Project that seeks to create a framework of clean, modern lines, whether in a private residence or a public project. Its design is inspired by a natural stone with a veining that is intense but not garish. It comes in three finishes: relief, natural and a lightly polished smooth



LYON

Full Body Porcelain Tile



MARFIL_LYON



GRIS_LYON



GALENA_LYON



ANTRACITA_LYON

30X60 cm. R10 : **1,500 BAHT/SQM.**
ACTUAL SIZE : 298x598 mm.



30x60 cm.
THICKNESS : 10 mm.

SURFACE
- NAT R10
- RELIEF R11





METEOR

Full Body Porcelain Tile

Grespania's METEOR series is a full body technical porcelain made up of a homogeneous, compact mixture of clays and natural materials with a high proportion of recycled products making it a very natural, environmentally-friendly porcelain option. The METEOR series boasts extremely high technical specifications ensuring it is very recommendable for high-traffic areas. Due to the versatility of the product, the METEOR series can offer itself to a multitude of solutions for diverse tiling applications, able to differentiate itself by means of varied textures satisfying anti-slip requirements and in some cases energy-savings.

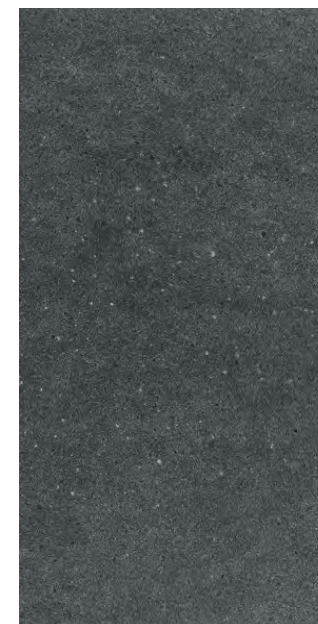


METEOR

Full Body Porcelain Tile



BLANCO_METEOR



ANTRACITA_METEOR

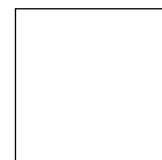


NEGRO_METEOR



30x60 cm.
THICKNESS : 10 mm.

SURFACE
- Natural R10



60x60 cm.
THICKNESS : 10 mm.

SURFACE
- Natural R10



30X60 cm. R10 : 1,500 BAHT/SQM.
ACTUAL SIZE : 298x598 mm.

60X60 cm. R10 : 1,500 BAHT/SQM.
ACTUAL SIZE : 598x598 mm.



GRESPANIA

TIVOLI

With the Tivoli series, Grespania has expanded its range of porcelain tiles inspired by semi-precious stones. The design for Tivoli is based on agate, a natural stone that has been prized since ancient times for its beauty and strength. Available in two finishes, natural and polished, and in a form of the large-format 60x120, this series can be used to create multifaceted compositions, endowing rooms with character and cachet.



TIVOLI



TIVOLI_BLANCO



TIVOLI_PERLA



TIVOLI_BEIGE

60x120cm. Matt (R9) : 1,800 BAHT/SQM.

Matt: Actual size : 598x1198 mm. Packing : 1.44 sqm./box

60x120cm. Matt (R9) : 2,100 BAHT/SQM.

Glossy : Actual size : 585x1185 mm. Packing : 1.40 sqm./box



60x120 cm.
THICKNESS : 11.3 mm.

SURFACE
- Matt (R9)
- Glossy



Glossy

Matt



TIVOLI



VILLAGE_ICE

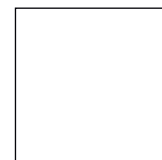
30X60 cm. R10 : 1,500 BAHT/SQM.
ACTUAL SIZE : 298x598 mm.

60X60 cm. R10 / R11 : 1,500 BAHT/SQM.
ACTUAL SIZE : 598x598 mm.



30x60 cm.
THICKNESS : 10 mm.

SURFACE
- R10



60x60 cm.
THICKNESS : 10 mm.

SURFACE
- R11





Keraben



LUXURY

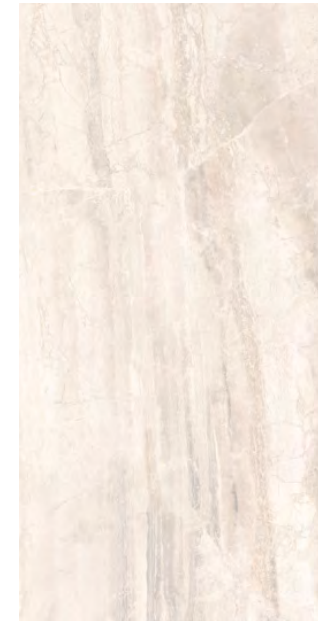
Inspired by Travertine marble, which reflects all the splendour of the Roman era, the Luxury collection achieves different decorative effects with its magnificent veins, its diverse forms and its unusual tones. In addition, the Soft finish enhances its stony appearance. The series is available in a range of natural colours (Marfil, Gris, Galena, Anthra-



LUXURY



LUXURY_WHITE



LUXURY_BEIGE

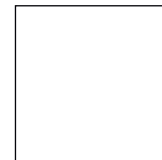
45x90 cm. : 1,800 BAHT/SQM.
ACTUAL SIZE : 450X901 mm.

90x90 cm. : 2,100 BAHT/SQM.
ACTUAL SIZE : 901X901 mm.



45x90 cm.
THICKNESS : 9 mm.

SURFACE
- Soft



90x90 cm.
THICKNESS : 9 mm.

SURFACE
- Soft





LUXURY



LUXURY_GREY

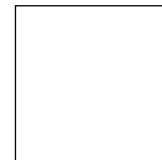


LUXURY_BLACK



45x90 cm.
THICKNESS : 9 mm.

SURFACE
- Soft



90x90 cm.
THICKNESS : 9 mm.

SURFACE
- Soft

45x90 cm. : 1,800 BAHT/SQM.
ACTUAL SIZE : 450X901 mm.

90x90 cm. : 2,100 BAHT/SQM.
ACTUAL SIZE : 901X901 mm.





SAVIA

It was only from an inner calm that man was able to discover and shape calm surroundings". This quote from Stephen Gardiner inspired the Keraben Design team into creating the Savia collection, which reflects to perfection the neutrality of contemporary wood.cite) and in two surfaces. All of these options make this a very versatile series.



SAVIA



SAVIA_CREMA (R9)



SAVIA_ROBLE (R9)
SAVIA_ROBLE ANTISLIP (R10)



SAVIA_CENTURY (R9)

18.5X75 cm. : 1,500 BAHT/SQM.



18.5X75 cm.
THICKNESS : 10 mm.

SURFACE
- NAT R9
- ANTISLIP R10



COTTO[■]

www.cottoitalia.com

LineOfficial : @cottoitalia

